



Beagle

Height: 33 to 38cm **Weight:** 8 to 14kg is considered ideal.

Origin: UK

Temperament: Cautious, clever and calm.

The beagle is the smallest of all hounds, a type of dog used extensively for rabbit hunting in 15th century England. Rabbit hunting does not involve horses, and as the hunters moved on foot they needed a dog that could accompany them easily. Beagles are small enough to be carried around in bags, so they were of great use to hunters.

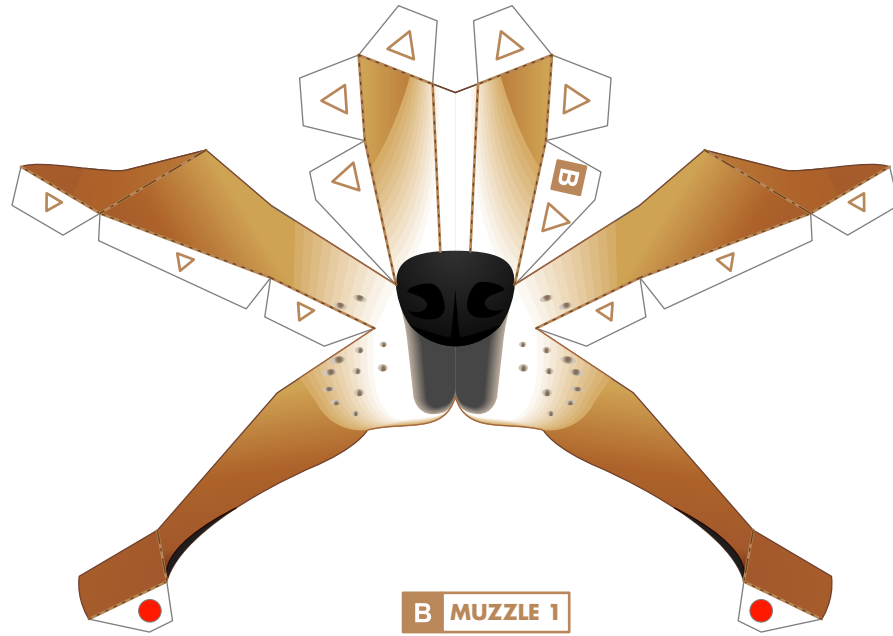
Beagles are descendants of British hounds such as the blood hound, and have sturdy bodies despite their small size.

Unlike other hunting dogs, they are usually used in packs, and are a breed of dog accustomed to being raised in groups.

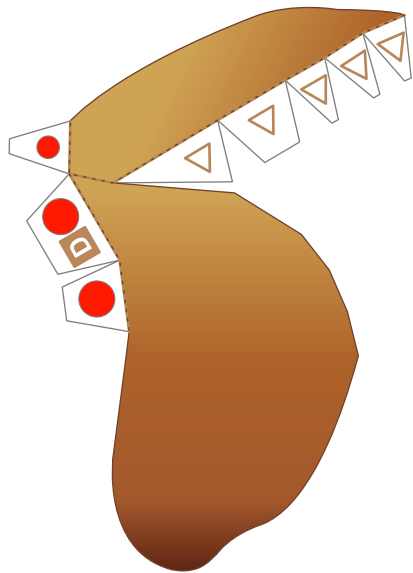
Beagles have a docile, patient, friendly temperament, making them perfect playmates for children too.

This Papercraft Beagle is about one third the size of the real dog.

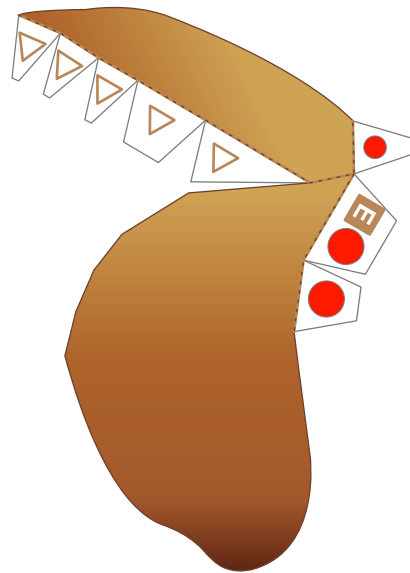




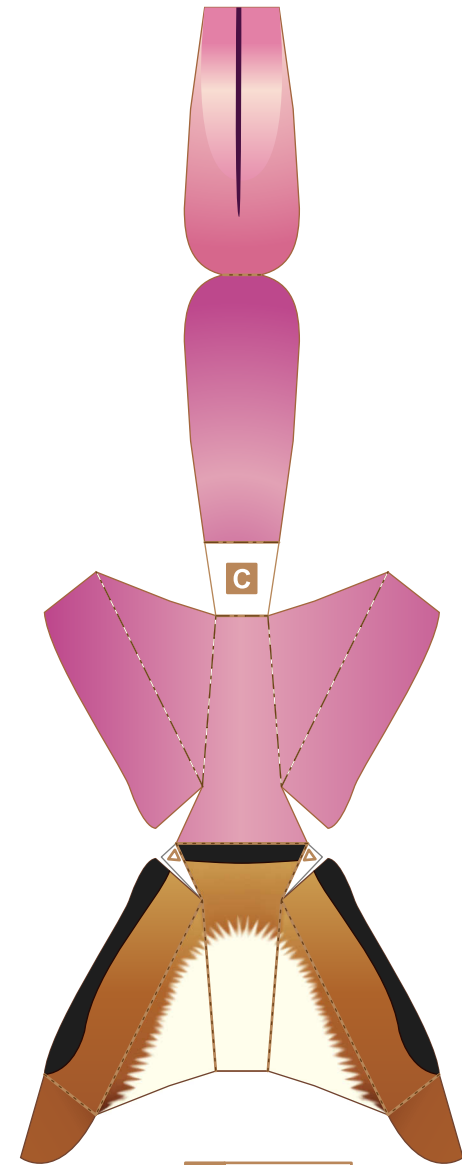
B MUZZLE 1



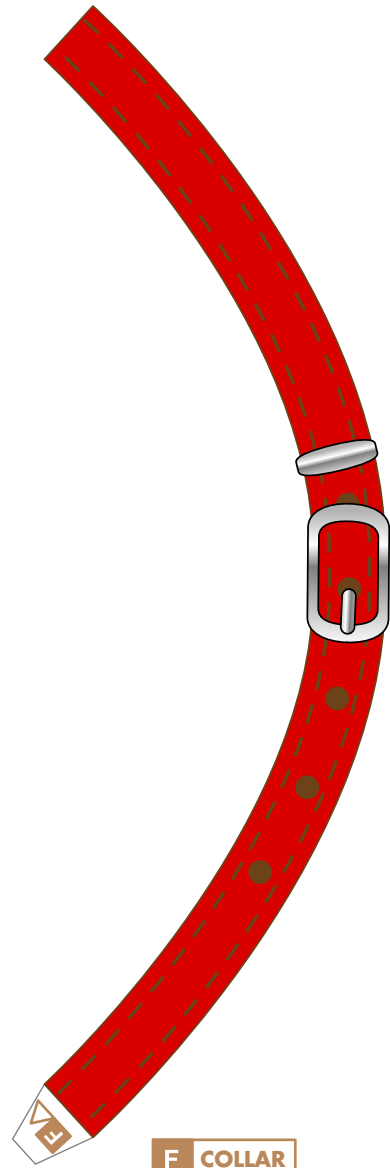
D EAR L



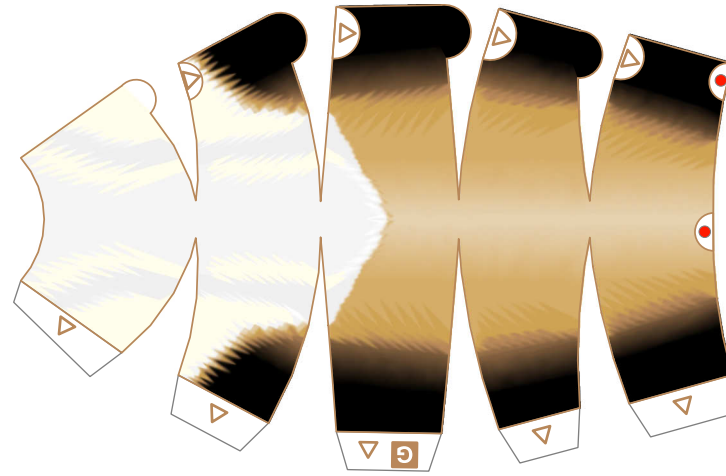
E EAR R



C MUZZLE 2



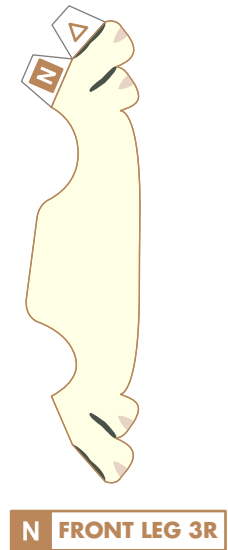
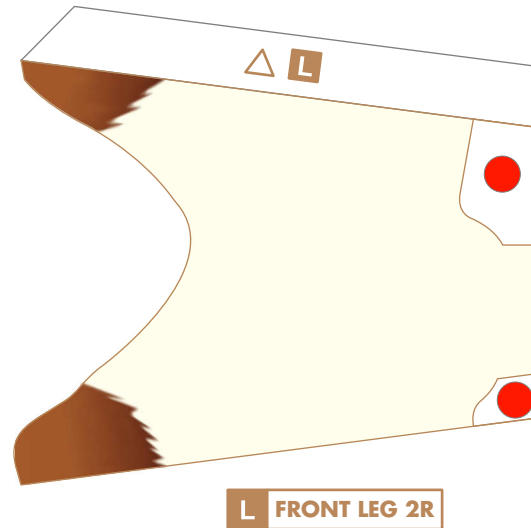
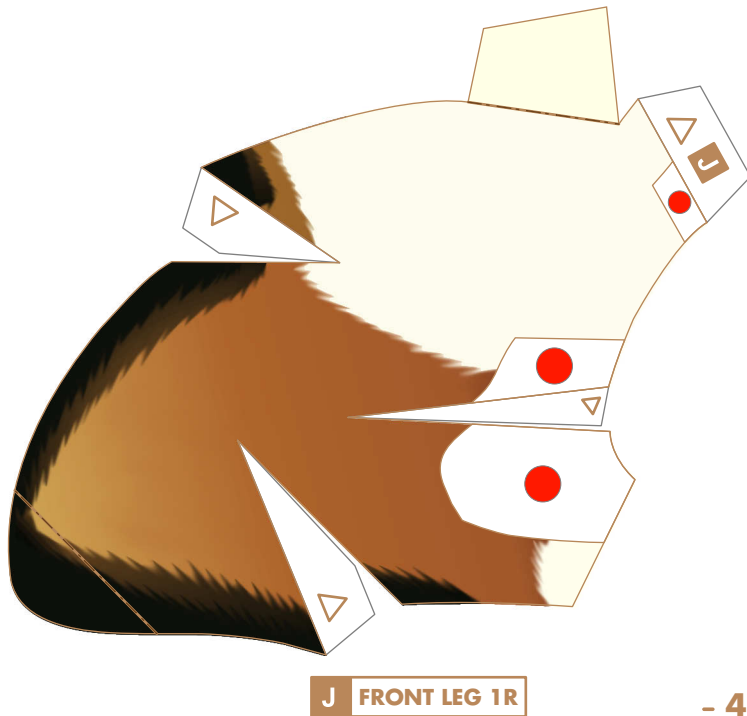
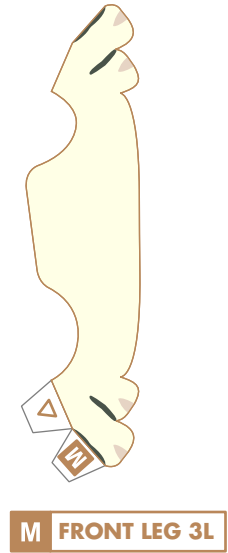
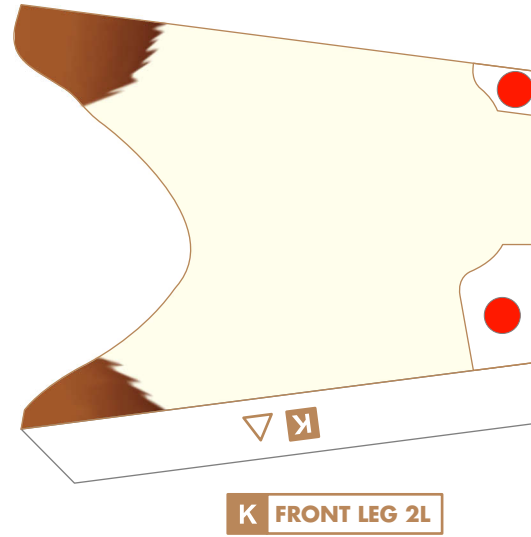
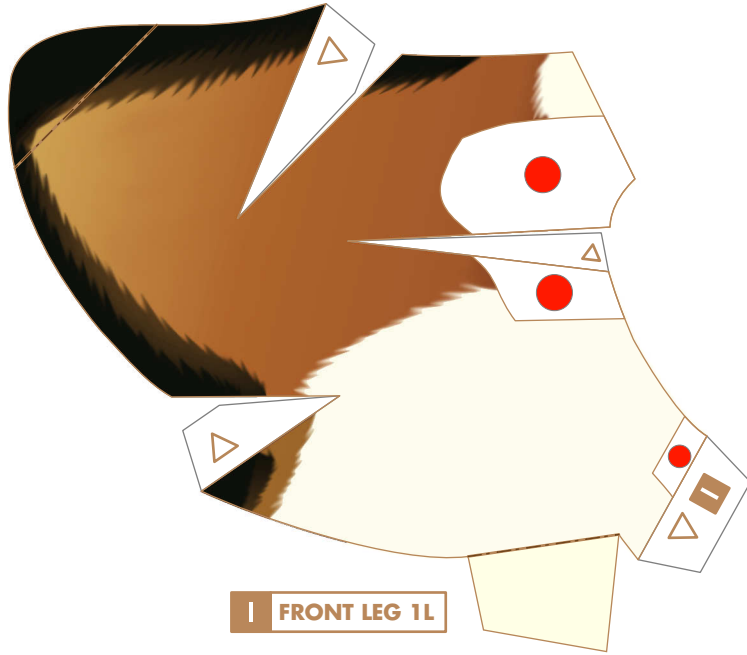
F COLLAR

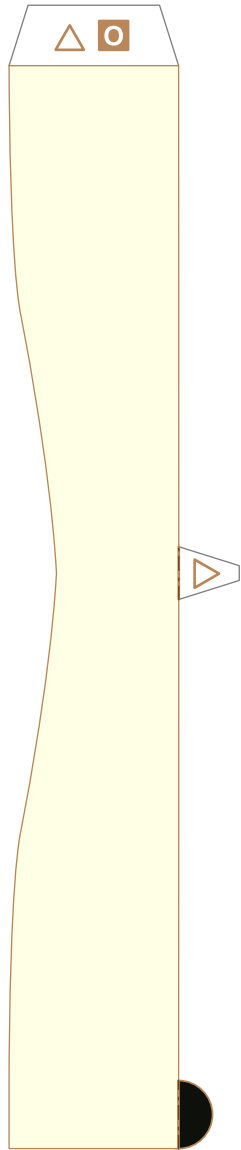


G TAIL 1



H TAIL 2

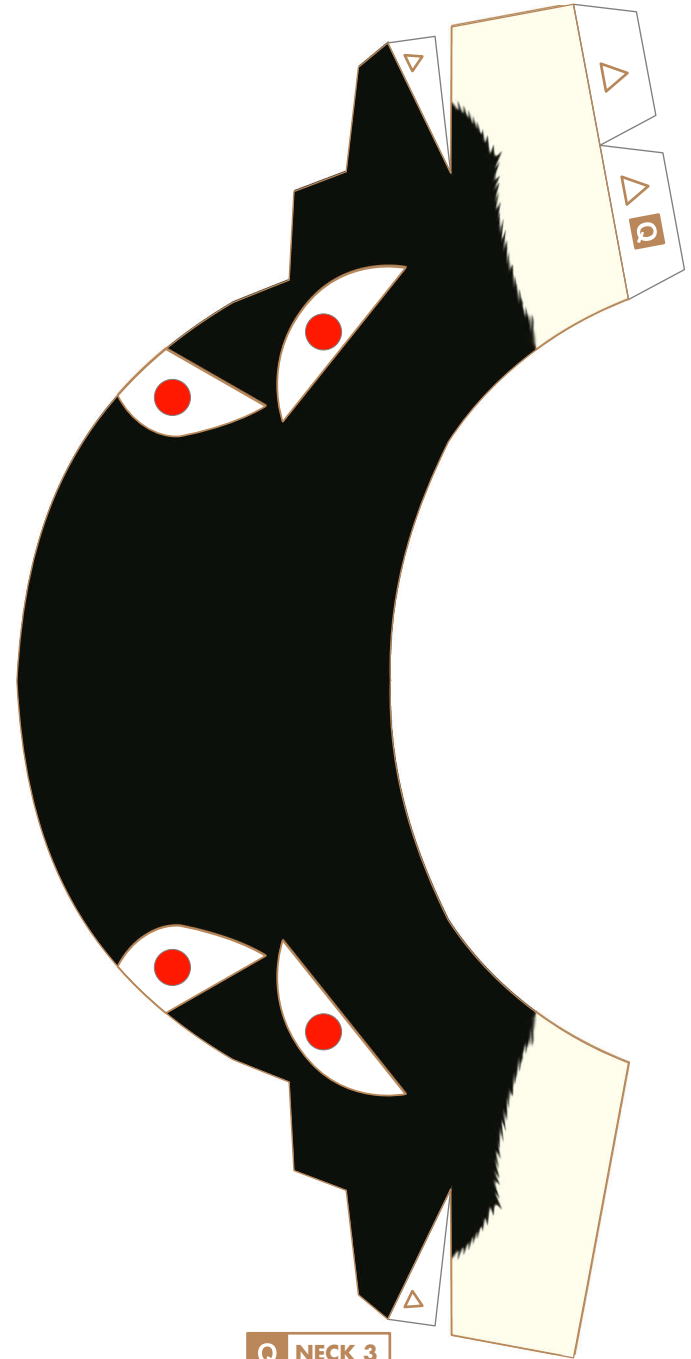




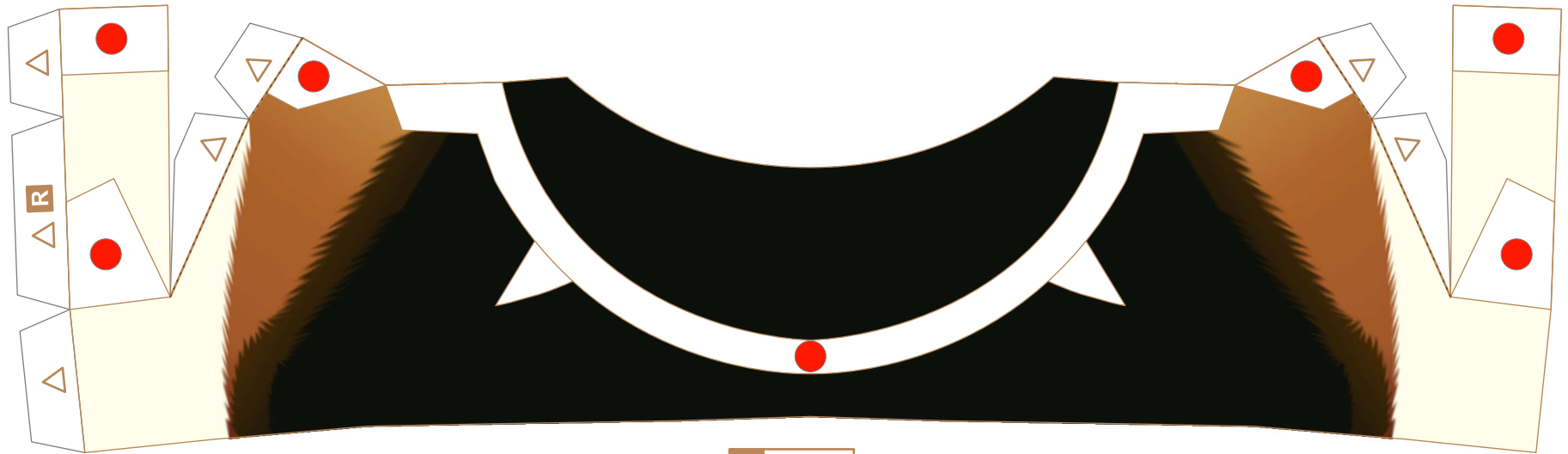
O NECK 1



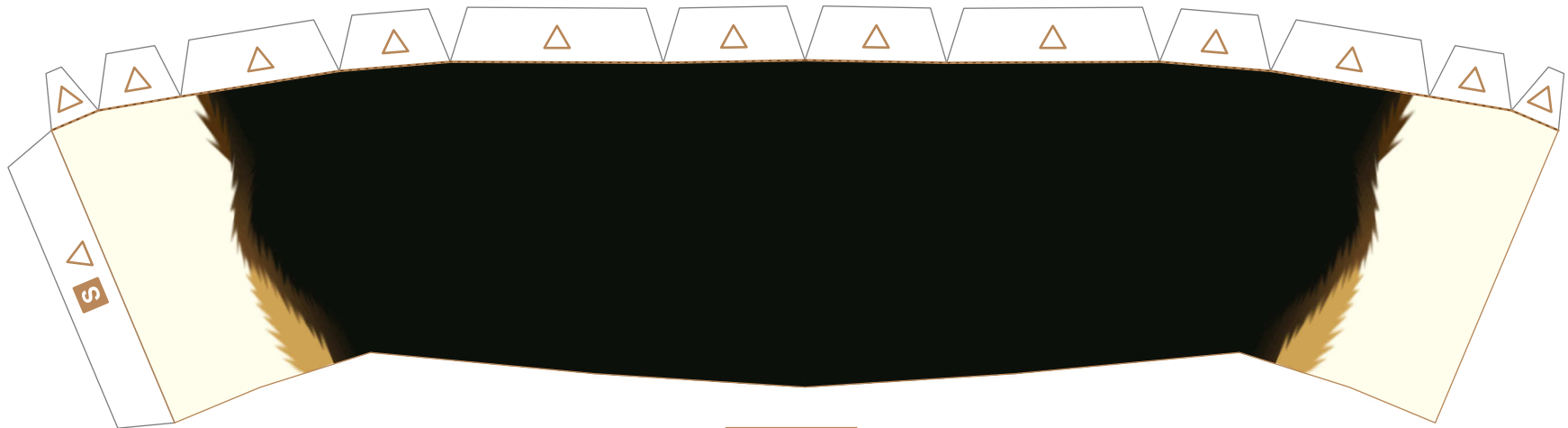
P NECK 2



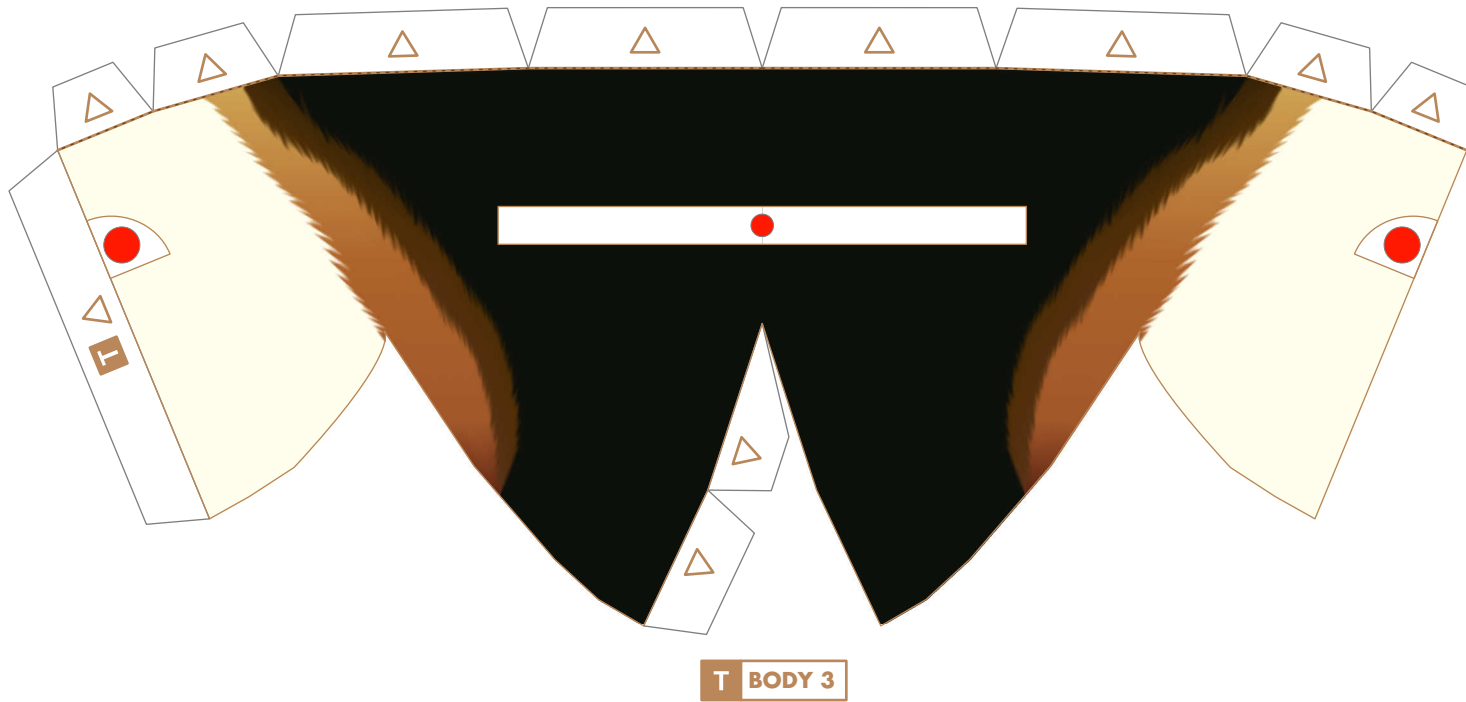
Q NECK 3

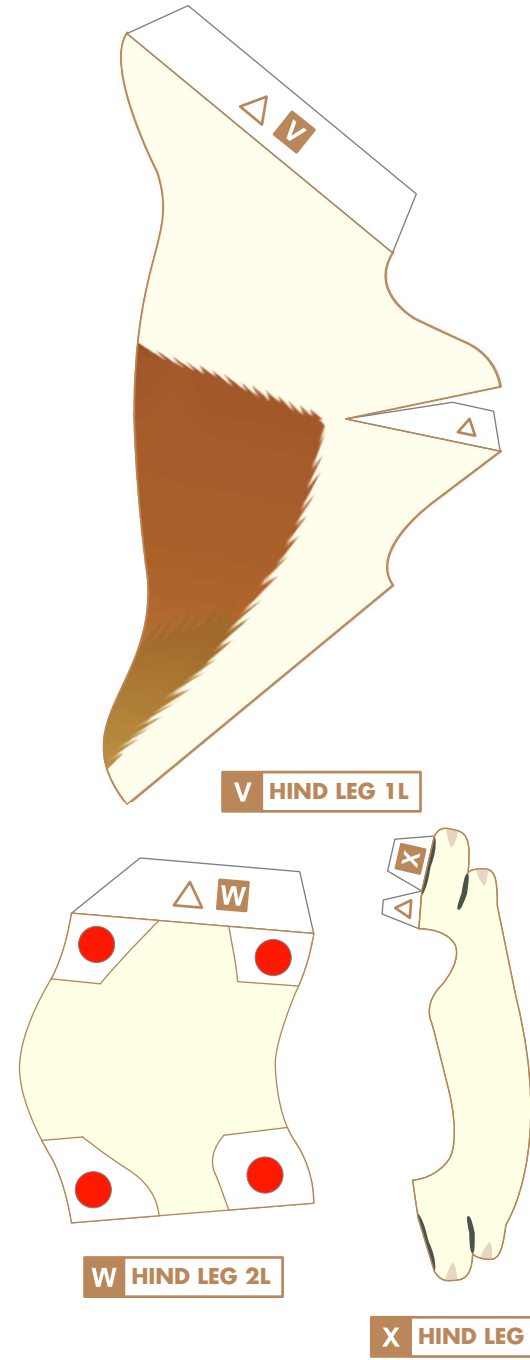
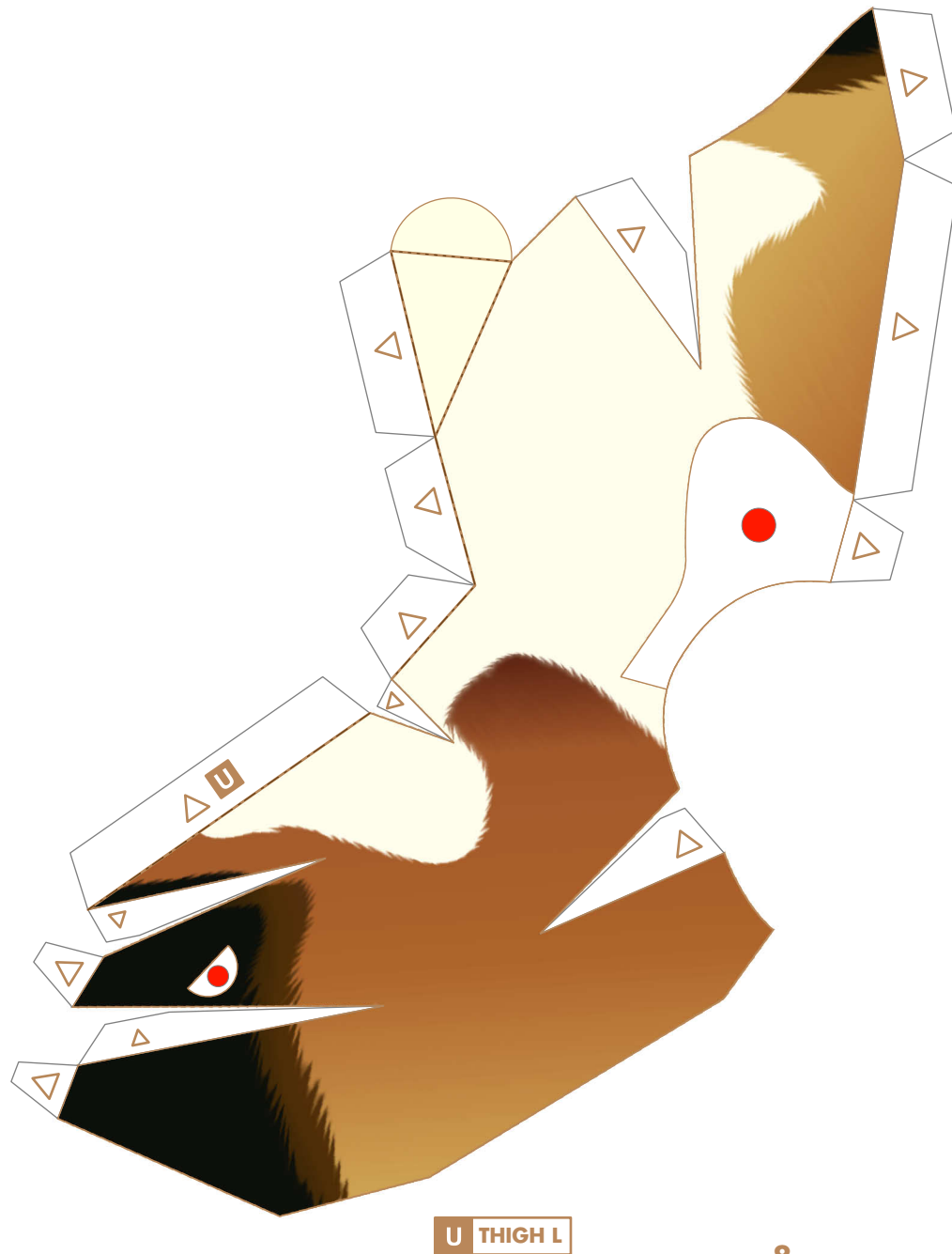


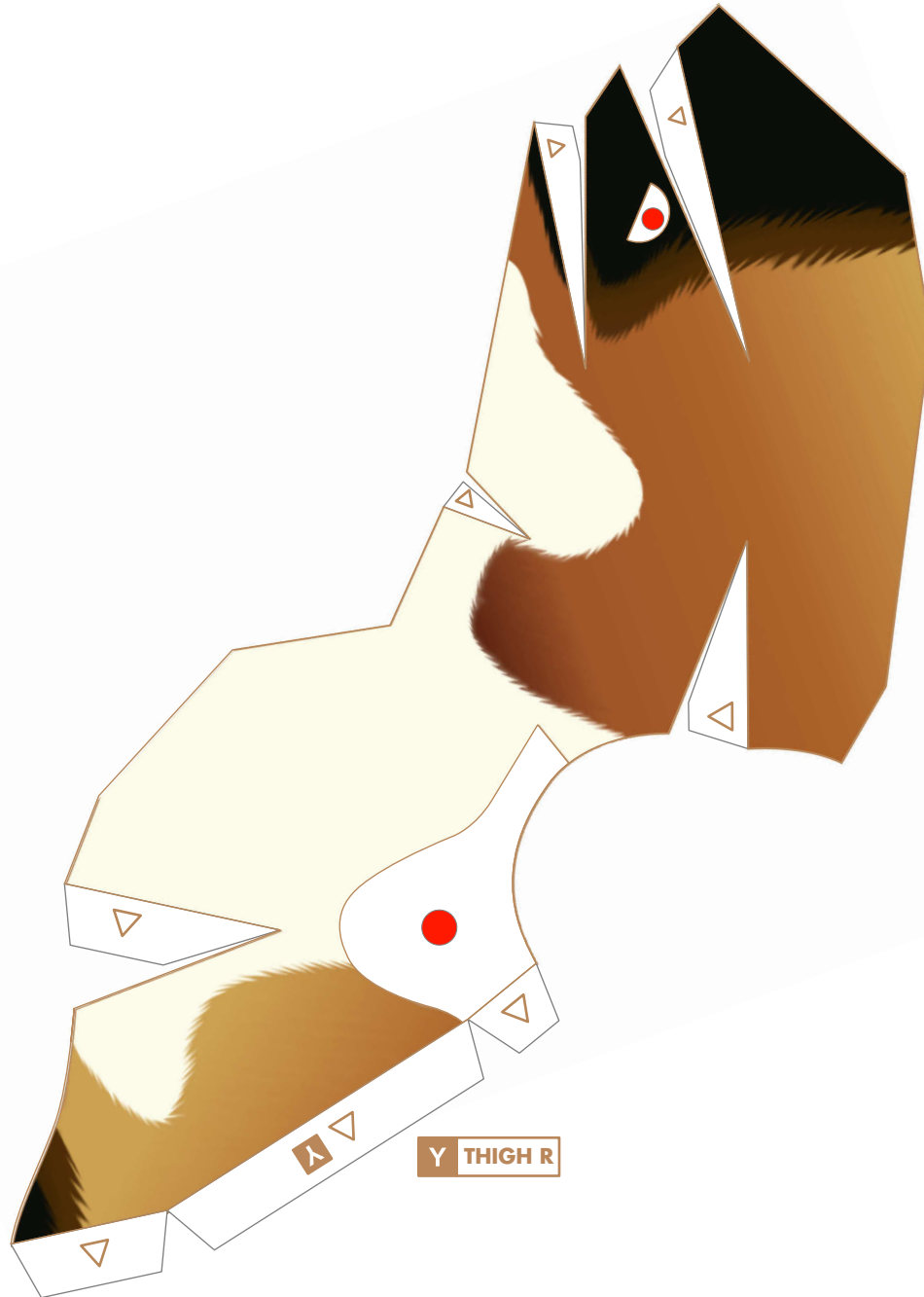
R BODY 1



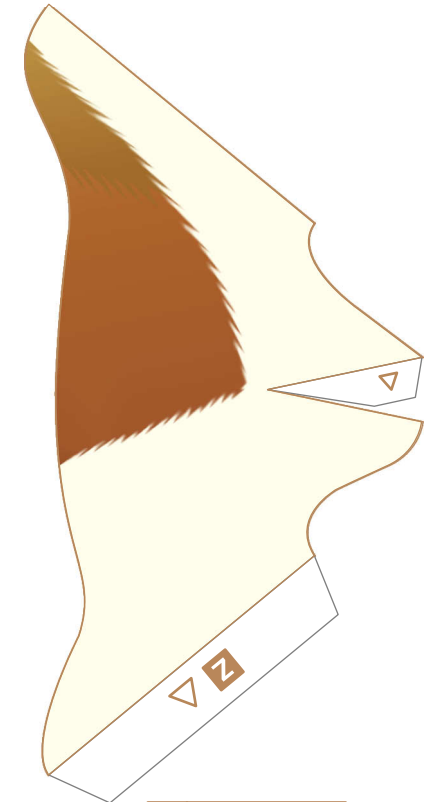
S BODY 2



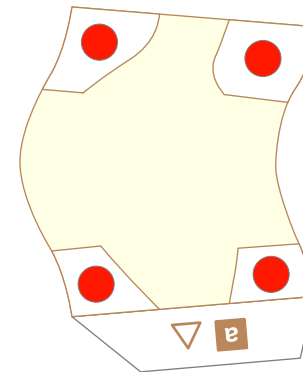




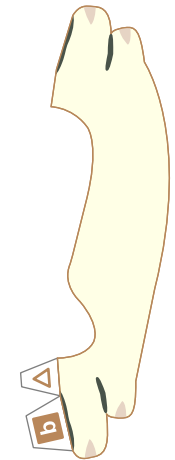
Y THIGH R



Z HIND LEG 1R



a HIND LEG 2R



b HIND LEG 3R

PAPER CRAFT

<http://www.canon.com/c-park/en/>



Beagle

Height: 33 to 38cm **Weight:** 8 to 14kg is considered ideal.

Origin: UK

Temperament: Cautious, clever and calm.

The beagle is the smallest of all hounds, a type of dog used extensively for rabbit hunting in 15th century England. Rabbit hunting does not involve horses, and as the hunters moved on foot they needed a dog that could accompany them easily. Beagles are small enough to be carried around in bags, so they were of great use to hunters. Beagles are descendants of British hounds such as the blood hound, and have sturdy bodies despite their small size. Unlike other hunting dogs, they are usually used in packs, and are a breed of dog accustomed to being raised in groups. Beagles have a docile, patient, friendly temperament, making them perfect playmates for children too.

This Papercraft Beagle is about one third the size of the real dog.

Assembly Instructions



----- Mountain fold



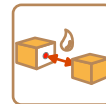
----- Valley fold



————— Cut line



△ A triangle mark indicates a glue tab.



● A red dot indicates a glue tab to be used to glue to another part.

Tools and materials



Scissors, straightedge, glue (We recommend craft glue), a round stick such as a pencil (used for applying curvature to paper).

Assembly tip



Crease all mountain folds and valley folds before gluing, and apply curvature to curved portions.

Caution



Keep glue away from small children.

Beagle : Assembly directions

Attach → Curve - - - - ->

A HEAD

Assembled parts

B MUZZLE 1

Assembled parts

C MUZZLE 2

Assembled parts

D EAR L E EAR R

Assembled parts

F COLLAR

Assembled parts

Beagle : Assembly directions

Attach → Curve - - - - -

G TAIL 1

Assembled parts

H TAIL 2

Assembled parts

I FRONT LEG 1L J FRONT LEG 1R

Assembled parts

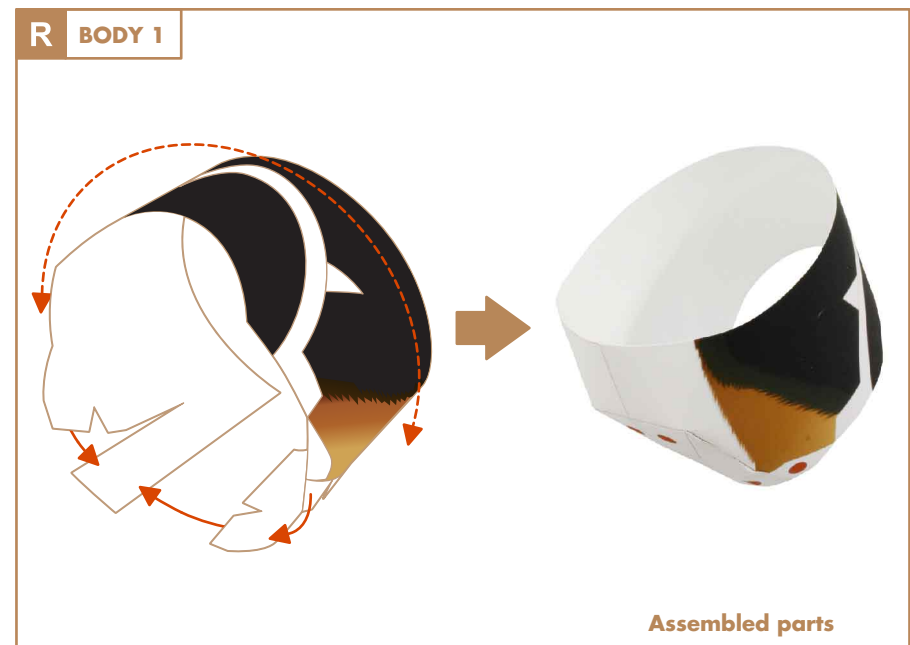
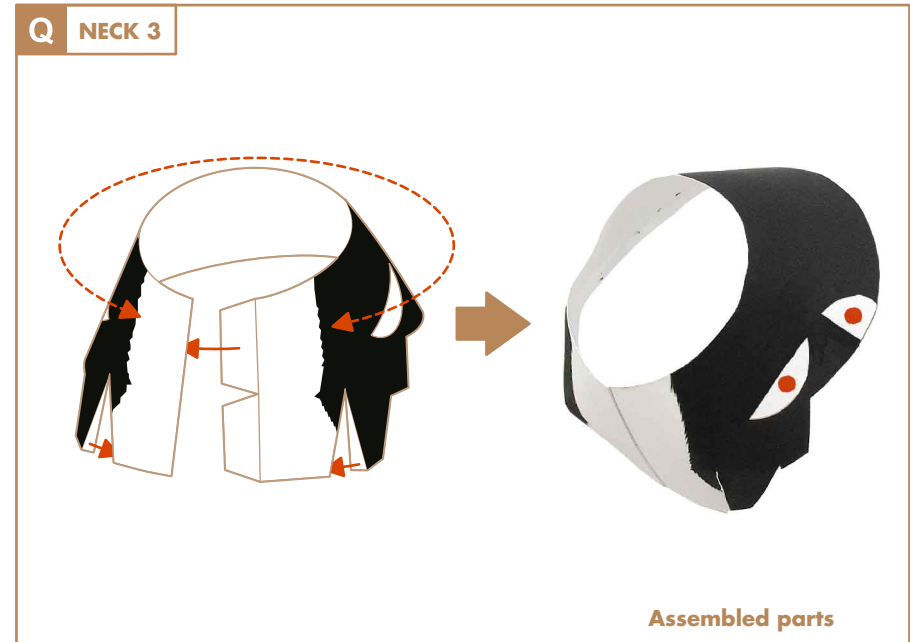
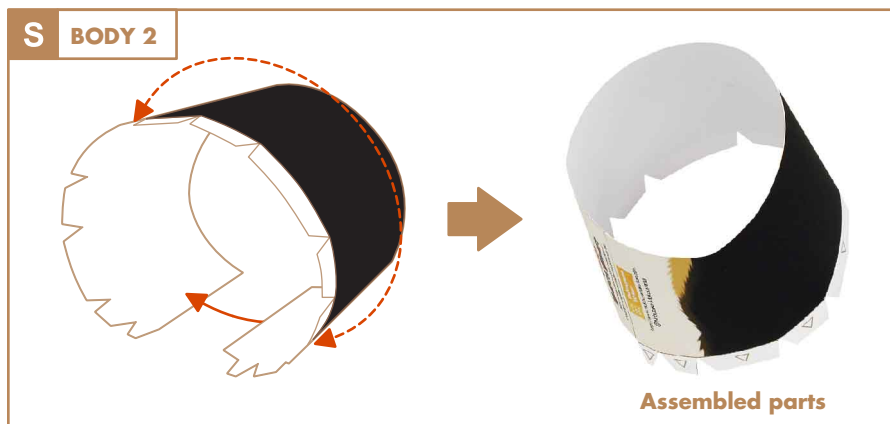
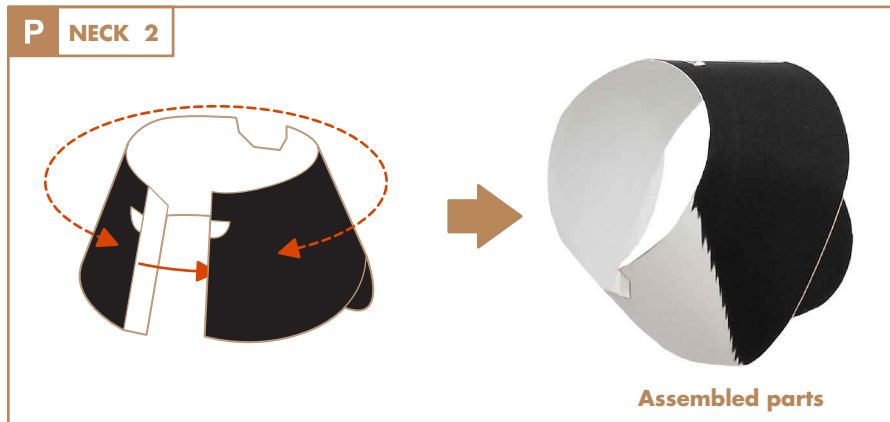
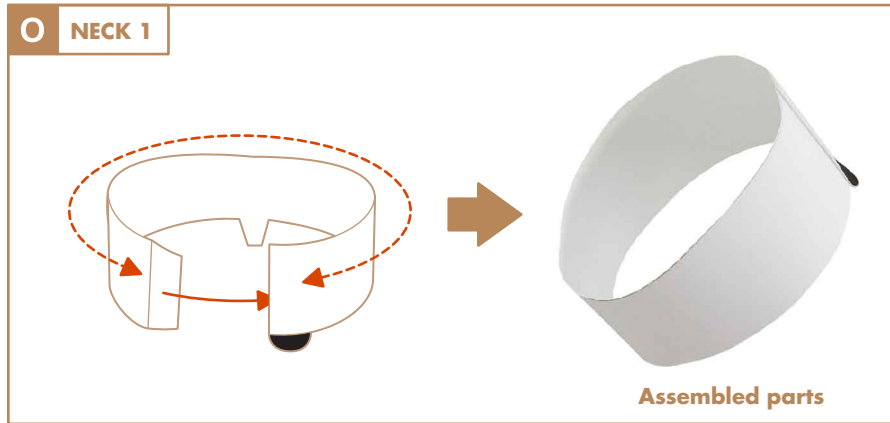
K FRONT LEG 2L L FRONT LEG 2R

Assembled parts

M FRONT LEG 3L N FRONT LEG 3R

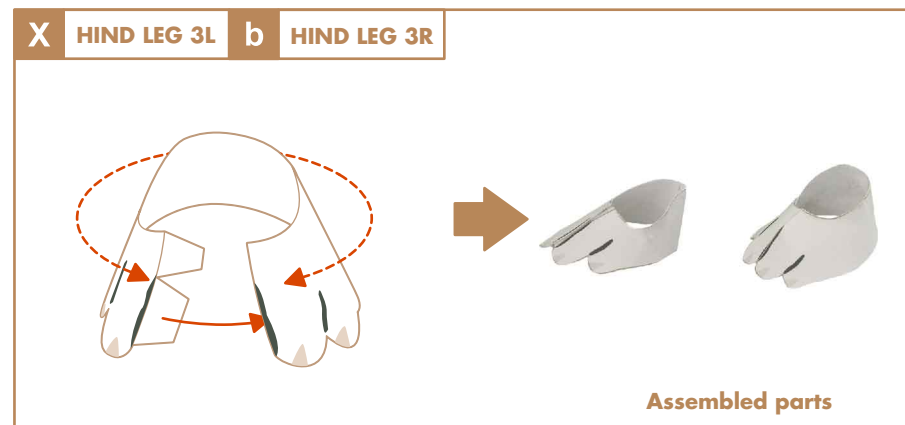
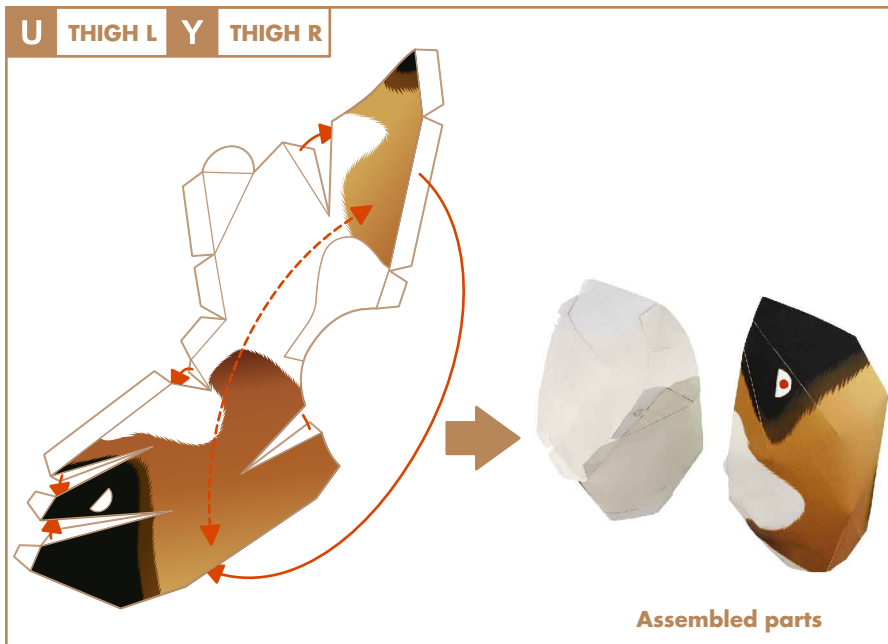
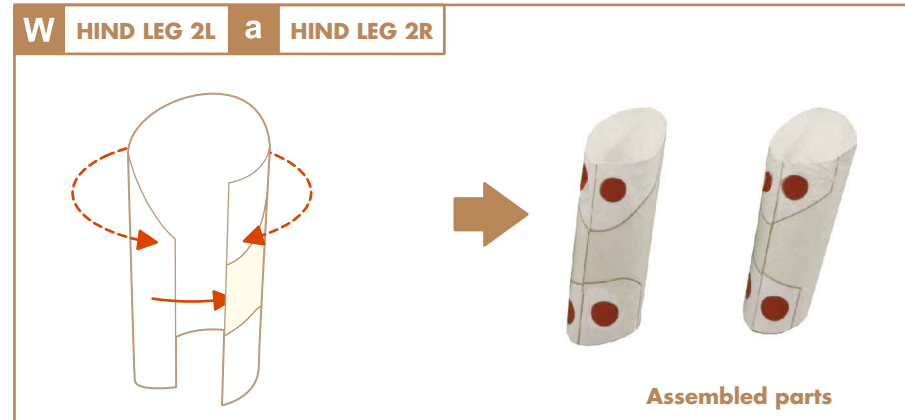
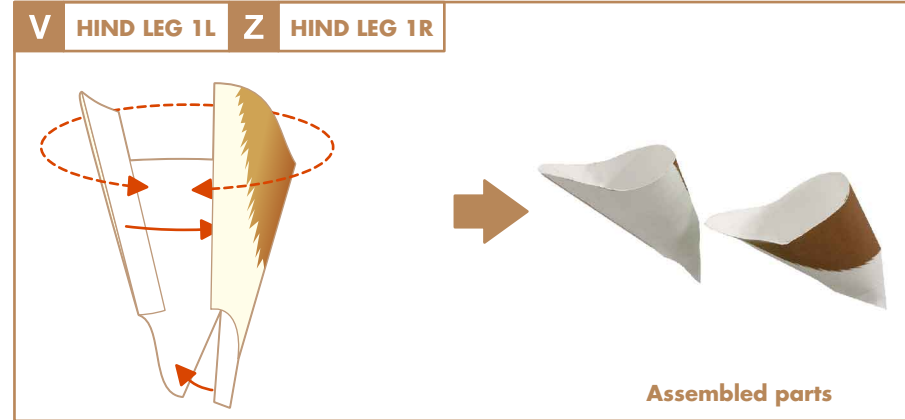
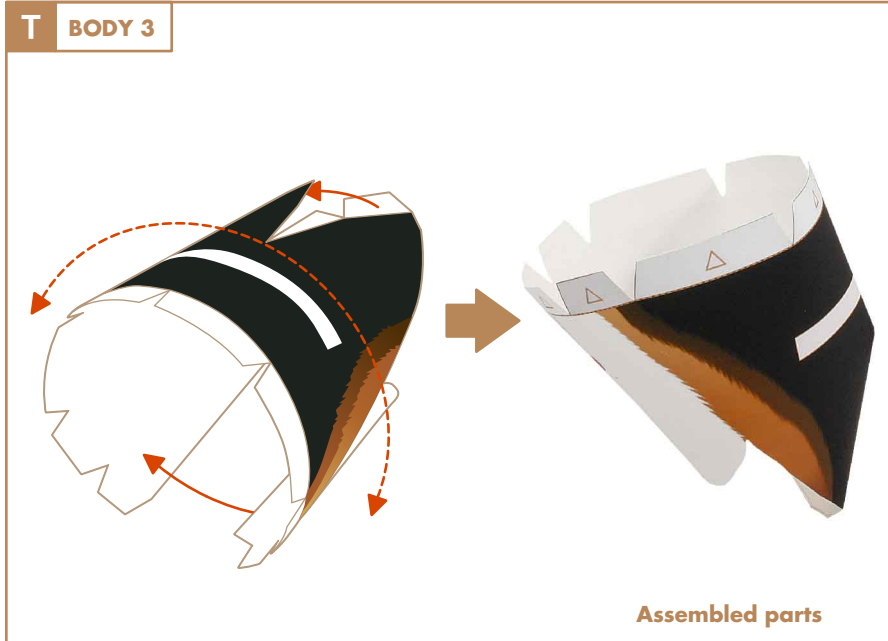
Assembled parts

Attach → Curve - - - ->



Beagle : Assembly directions

Attach \longrightarrow Curve \dashrightarrow

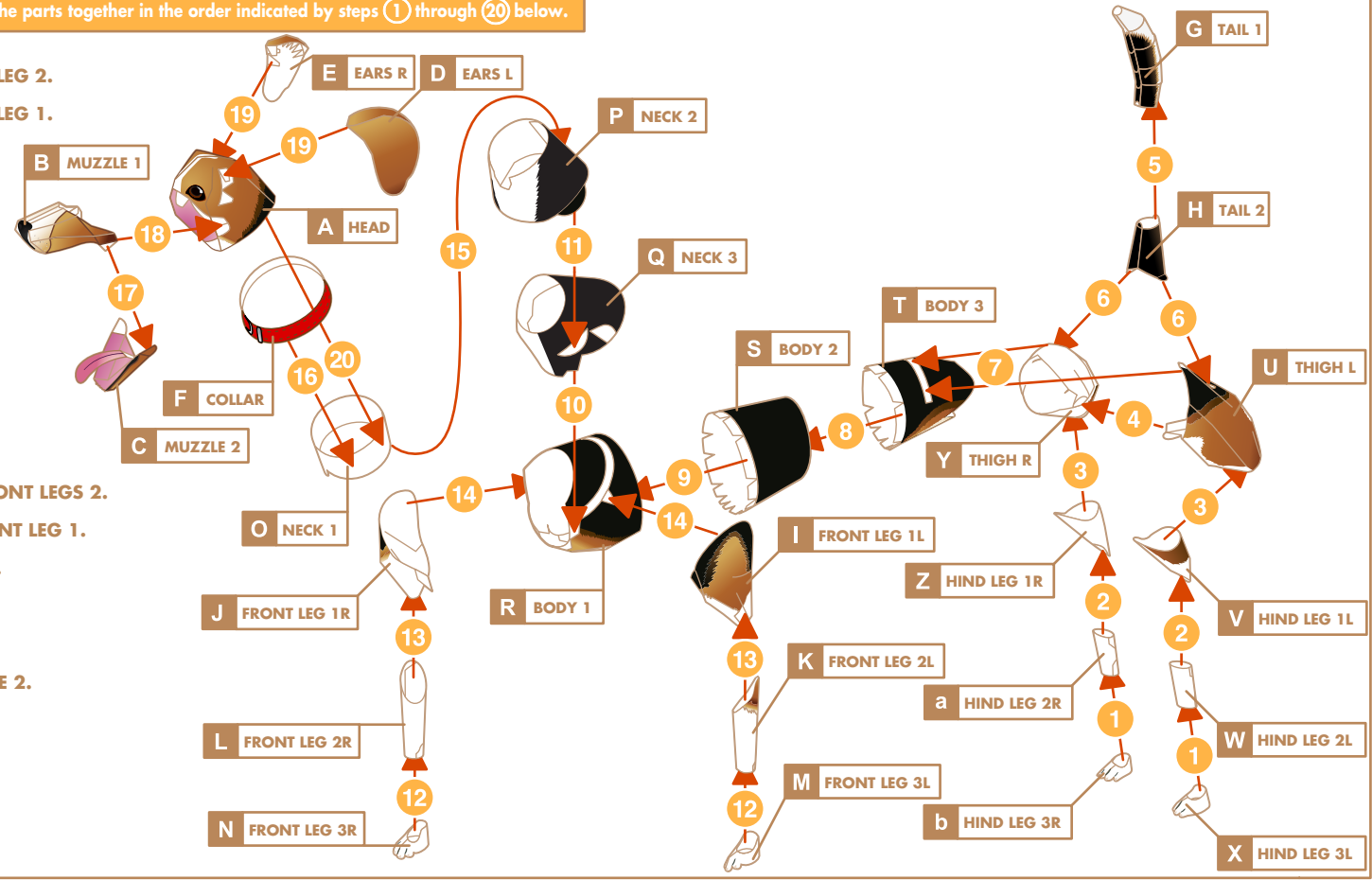


Beagle : Assembly directions

Attach → Curve - - - ->

★ **Final assembly** Put the parts together in the order indicated by steps ① through ⑳ below.

- ① Glue HIND LEG3 to HIND LEG 2.
- ② Glue HIND LEG2 to HIND LEG 1.
- ③ Glue HIND LEG to THIGH.
- ④ Glue THIGH L to THIGH R.
- ⑤ Glue TAIL 2 to TAIL 1.
- ⑥ Glue TAIL to THIGH.
- ⑦ Glue THIGH to BODY 3.
- ⑧ Glue BODY 3 to BODY 2.
- ⑨ Glue BODY 2 to BODY 1.
- ⑩ Glue NECK 3 to BODY.
- ⑪ Glue NECK 2 to NECK 3.
- ⑫ Glue FRONT LEGS 3 to FRONT LEGS 2.
- ⑬ Glue FRONT LEG 2 to FRONT LEG 1.
- ⑭ Glue FRONT LEG to BODY.
- ⑮ Glue NECK 1 to NECK 2.
- ⑯ Glue COLLAR to NECK.
- ⑰ Glue MUZZLE 1 to MUZZLE 2.
- ⑱ Glue MUZZLE to HEAD.
- ⑲ Glue EARS to HEAD.
- ⑳ Glue HEAD to NECK.



★ **Complete photo**

